



Digital Option



PENTA/TRAK MASTER/VOICEMASTER PRO/TWINTRAK PRO DIGITAL OPTION INSTALLATION

PENTA/TRAK MASTER/VOICEMASTER PRO/TWINTRAK PRO Digital 24/96 Output Kit

The kit should contain: -

Qty	Description
1	24/96 Analogue to Digital converter card
2	Crosshead screws
2	Support pillars
2	Nyloc nuts

Tools required: -

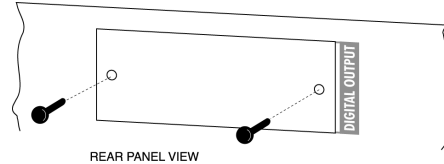
No. 1 crosshead screwdriver, Pozidriv preferred.
M3 nut driver/spanner.

WARNING!

THE MODULE SHOULD BE DISCONNECTED FROM THE AC POWER BEFORE ATTEMPTING TO CARRY OUT THE FOLLOWING INSTRUCTIONS.

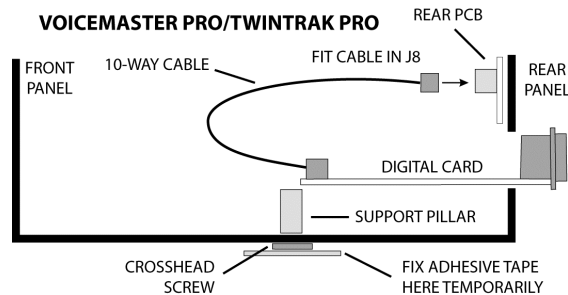
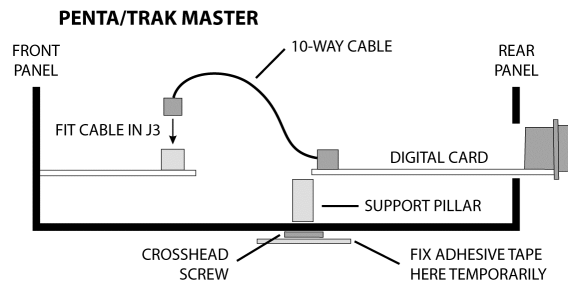
ALLOW THE MODULE TO COOL BEFORE STARTING INSTALLATION OF THE DIGITAL OPTION.

ANTI-STATIC PRECAUTIONS SHOULD BE TAKEN WHEN HANDLING THE CARD OUTSIDE OF ITS ANTI-STATIC BAG; ONLY HANDLE THE CARD BY GRIPPING THE CARD BY ITS EDGES AND AVOID TOUCHING ANY OF THE COMPONENT PARTS OTHER THAN THE CABLE AND CONNECTORS. PLACE THE UNIT ON A CLEAN, FLAT SURFACE.



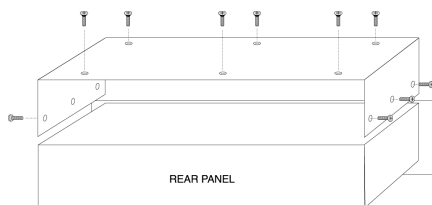
Installing Digital Card

The digital card is mounted in place using the digital connector fixings and the two plastic support pillars, which should be fitted to the module base using the two crosshead screws supplied.



Top Cover Removal

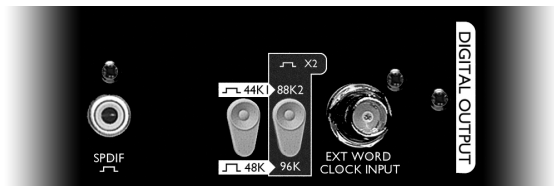
Remove the 12 crosshead screws fixing the top cover to the top and sides of the module.



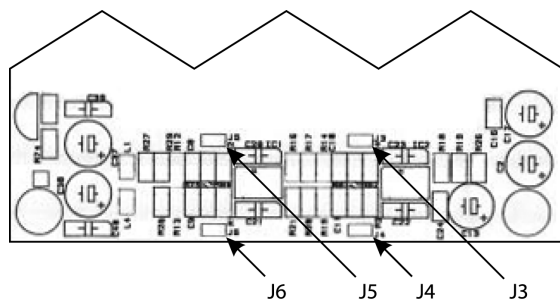
Digital Option Cover Removal

The rear panel digital connector area is accessed by removing the small rear cover plate next to "DIGITAL OUTPUT". The plate is removed by removing the two crosshead screws. Retain these screws for securing the digital card in place later.

1. Place module on a flat clean surface with the bottom facing uppermost and offer the two crosshead screws supplied to the two countersunk holes in the base, using a small piece of adhesive tape to secure the head of the screw to the bottom surface of the module.
2. Place module top uppermost and from the inside of the module place the two plastic support pillars over each screw.
3. Now offer the digital card from the rear of the module, lining up the screws from the base with the two holes in the card, and secure it in place with the two Nyloc nuts supplied.
4. Using the two screws that secured the original blanking panel, secure the digital card to the rear panel.
5. Plug in the 10-way cable to J3 (Penta/Trak Master), J4 (TwinTrak Pro - on rear PCB) or J8 (Voicemaster Pro - on rear PCB) on the main circuit board, and finally remove the adhesive tape from the base of the module.



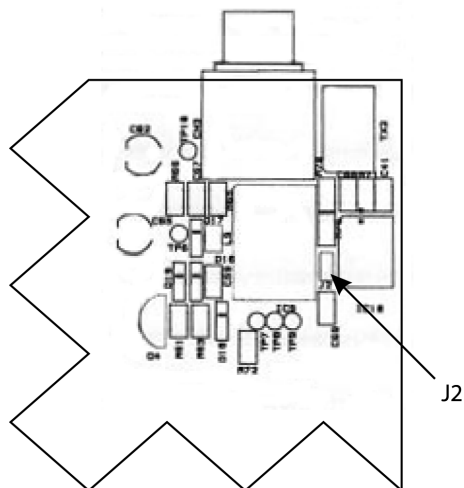
Selecting 24/96 Card for PENTA/TRAK MASTER/VOICEMASTER PRO/TWINTRAK PRO Use



- For use with **Penta**, links J3, J4, J5 and J6 should be left fitted, as supplied from factory.
- For use with **Trak Master/VoiceMaster Pro/TwinTrak Pro**, remove links J3, J4, J5 and J6.

Selecting for Professional or Consumer Use

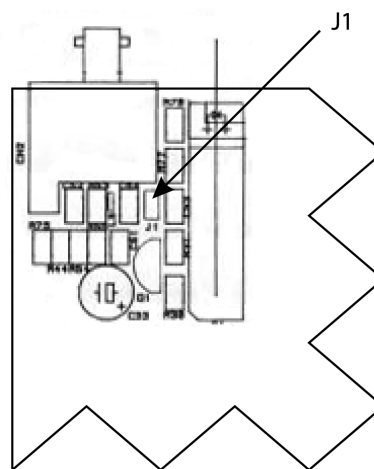
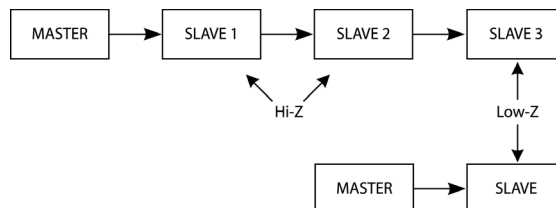
This link determines the SPDIF output level for use with various Professional and Consumer products. Please consult your recording product/soundcard manual to determine which setting is appropriate for your system.



- For Professional use, J2 should be left fitted, as supplied from factory.
- For Consumer use, J2 should be removed.

Selecting Word Clock Impedance

When using the module as the only slave, or at the end of a chain of several slaves, 75 Ω Low-Z should be selected. If using the module with several other slave modules in a chain, Hi-Z should be selected. See the following diagram:



- For 75 Ω Low-Z operation, J1 should be left fitted, as supplied from factory.
- For Hi-Z operation, J1 should be removed.

Replacing the Top Cover

The top cover should now be replaced using the 12 crosshead screws to secure firmly to the chassis.

The installation is now complete and the unit can be reconnected to the AC power.

Notes

- When syncing to an external clock the sampling frequency should be set to match between the two pieces of equipment.
- If you experience any difficulties installing this digital option please contact Focusrite technical support at tech@focusrite.com

www.focusrite.com